

Bidop™ ES-100V3

BI-DIRECTIONAL HAND HELD DOPPLER
WITH WAVEFORM LCD



Hadeco.....THE ADVANTAGE OF DIGITAL TECHNOLOGY

● BI-DIRECTIONAL HAND HELD DOPPLER WITH LCD

Displays real-time waveform, numerical data and heart rate.

● HADECO DESIGNED SMART MICROPROCESSOR

Enables full-automatic gain control and baseline adjustment.

Very simple operation by combination with Shuttle button and Back key.

30 waveform memory

● USB COMPUTER INTERFACE

Transfers waveforms and numerical data to a computer for data storage.

Communication cable and software, **Smart-V-Link**, available.

● SIMPLE OPERATION WITH SHUTTLE BUTTON, BACK KEY AND PROBE BUTTON

Allows you an easy mode setting as well as freezing waveform.

● MULTIPROBE SELECTION

2, 4, 5, 8 and 10 MHz for user flexibility.

● SMALL SIZED PPG PROBE OPTION

Expands arterial & venous testing.

PROBE SELECTION

Standard (Clinic)



Pencil



Flat (Monitoring)

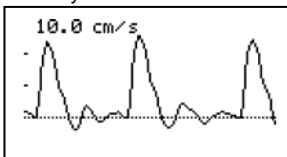


Fetal (2 MHz)



DISPLAY SAMPLES

Velocity waveform



Numerical data

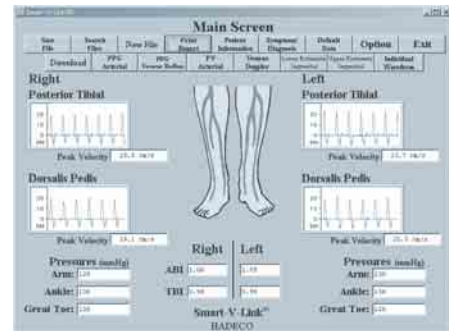
| | |
|-----|-----------------|
| S: | 23.60 cm/s |
| MN: | 4.72 cm/s |
| D: | 0.24 cm/s |
| RP: | 0.99 SD: 98.33 |
| PI: | 5.74 HR: 60 BPM |

CLINICAL APPLICATIONS

- Peripheral vascular procedures
- Lower extremity segmental pressures
- Toe pressures (PPG)
- Venous reflux assessment (PPG)
- Penile systolic pressures
- Fetal heart rate (2 MHz)

OPTION

Smart-V-Link PC software for Windows



SPECIFICATIONS

| | | | |
|--------------------|---|--------------------|---|
| Power: | DC 9V, 9 V alkaline battery | LCD display: | 128×64 dots, STN LCD |
| Battery life: | Approx. 2.5 hours | | Waveform, Numerical data & Heart rate |
| Automatic shut-off | | Outputs: | Headset: Speaker cut off |
| Speaker output: | 200 mW or more | | Serial port: USB |
| Multi frequency: | 2, 4, 5, 8, 10 MHz | Dimensions: | 75 (W) × 140 (D) × 25 (H) mm |
| Waveform memory: | 30 waveforms | Weight: | 350 grams (including battery and probe) |
| Mode settings: | Memory (store, read & clear), Direction, Scales (time & unit), Language, etc. | Electrical safety: | Conforms to IEC60601-1 |

* Specifications subject to change.