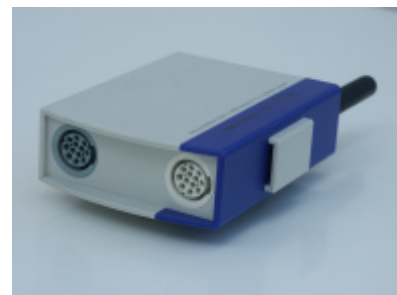
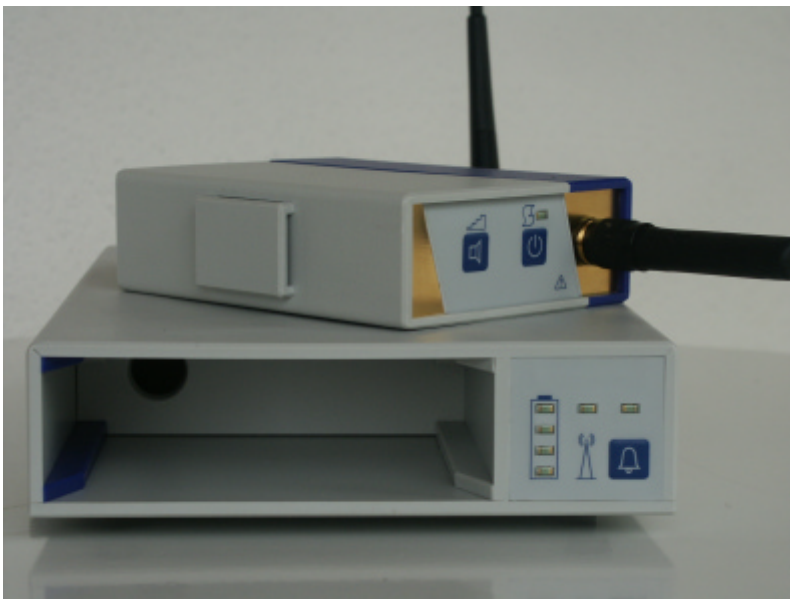


T610, the Telemetry System for the Measurement of Fetal Heart Rate and Uterine Activity.



### T610 offers:

- Mobile Monitoring in a reliable Range.
- Freedom of Movement to the Patient.
- Safety in Presence of Water.
- Easy Handling.
- Patient Recall Facility.
- Re-chargeable Li-Ion Battery, Automatic Charging.
- Available as 2 or 3 Channel System.
- Works with standard Transducers.
- Speaker for Checking the Audio Signal in Transmitter.

## T610

The Rimkus T610 telemetry system is designed for ambulatory monitoring of fetal heart rate and uterine activity during pregnancy and delivery. The T610 consists of two components: the transmitter unit and the receiver unit. For transmission of the signals a modern digital transceiver technique is used to enable a bidirectional link between Patient device and Monitor. The mobile transceiver unit can be carried easily by a strap over the shoulder due to its small size and weight. The range depends on the local conditions, and can be up to some 100 meters. The transmission inside the hospital is quite reliable, but exact information on the range of a telemetry system can only be given by a field test. The telemetry is compatible and approved for use with any of the Corometrics Fetal Monitors with a telemetry interface.

The System T610 is equipped with a recall facility for the patient. The receiver unit can transmit a calling signal which activates a beeper in the transmitter unit at the patient. For marking an event the patient can press a button at the transmitter.

The transmitter unit is powered by a low voltage Li-Ion battery. This is safe and allows the measurement of fetal and maternal signals even when the patient is in water.

### The Transmitter Units

The transmitter units of both systems T612 and T613 are small and light weighted. They are powered by a rechargeable battery. The receiver includes a combined charging and storing compartment for the transmitter unit. When in this compartment the battery

of the transmitter is recharged automatically and at the same time the telemetry can continue to transmit data. From a fully charged battery the transmitter can operate about 12 hours. If the transmitter is placed intermediately in the compartment during the measurement, the operating time can be expanded considerably.

An internal loud speaker can be activated to control the audio signal of the Ultrasound measurement. This allows for easy handling when placing the transducer or when checking the position during monitoring.

### Transducers

One TOCO- and an Ultrasound-Transducer can be plugged into the T612 transmitter. The 3-channel T613 transmitter can operate with an additional heart rate signal from either fetal or maternal electrodes or an additional Ultrasound-Transducer. Using the third channel twins can be monitored by the telemetry T613.

The Rimkus Telemetry T610 uses the same transducers as used on the stationary CTG.

### The Receiver Units

The receiver units are flat components which fit under the CTGs as well as into a compartment of a trolley. As standard each receiver has its own antenna directly connected at the rear panel. If necessary a remote antenna or antenna systems can be used. Even in severe cases a solution can be found, but mostly a good range will be found without any additions.

The receiver connects its signals to the interface of the CTG. When enabled, the CTG

switches from stationary to telemetry mode when the telemetry is in use with its transducers. If the transmission goes out of range the signals are switched off.

## Technical Data

### Transmitter units

Power supply 3,7V Li-Ion Bat.  
Operation Time: 12h  
RF-Transmitter: 433Mhz, 10mW  
RF-Channels selectable: 62  
Antenna: Helix Antenna  
Transmission: digital  
Modulation: FSK  
Dimensions: 120x92x34mm

#### T612S

Inputs: Ultrasound  
TOCO

Weight: 275g

#### T613S

Inputs: Ultrasound  
TOCO

Ultrasound or ECG

Weight: 315g

### Receiver Units

#### T612E and T613E

Power supply: 95...250V, 15VA  
RF Input Sensitivity: <0,3uV  
Antenna: Gainflex Antenna  
RF-Channels selectable: 62  
Charging: 4h max., automatically  
Outputs: Signals  
RF Output: Patient Call, 433MHz  
Dimensions: 160x240x44mm  
Weight: 770g

---

### Your Distributor: